

Power supply unit type Z-4



Power supply unit type Z-4 is an electrical device designed for use in underground mining pits in non-explosive hazard conditions or on the ground.

Power supply unit type Z-4 is designed for connecting and switching on four receivers of protection class II (especially power tools) for the rated voltage of 230 V.

The device is equipped with power protection against overloads.

TECHNICAL DATA:

ingress protection	IP54
rated power supply voltage	500V
rated voltage of outlet	230V
rated power of outlet	1600VA
rated outlet current	6A
number of outlets	4
frequency	50Hz
dimensions	1200x700x370mm (height x width x depth)
weight	to 150kg
maximum cross-section of the power supply cable	up to 6 mm ²

Note: rated power of power tools cannot exceed 16 A.

CONSTRUCTION

The power supply unit housing is made of steel sheet and comprises of a power supply and control compartment.

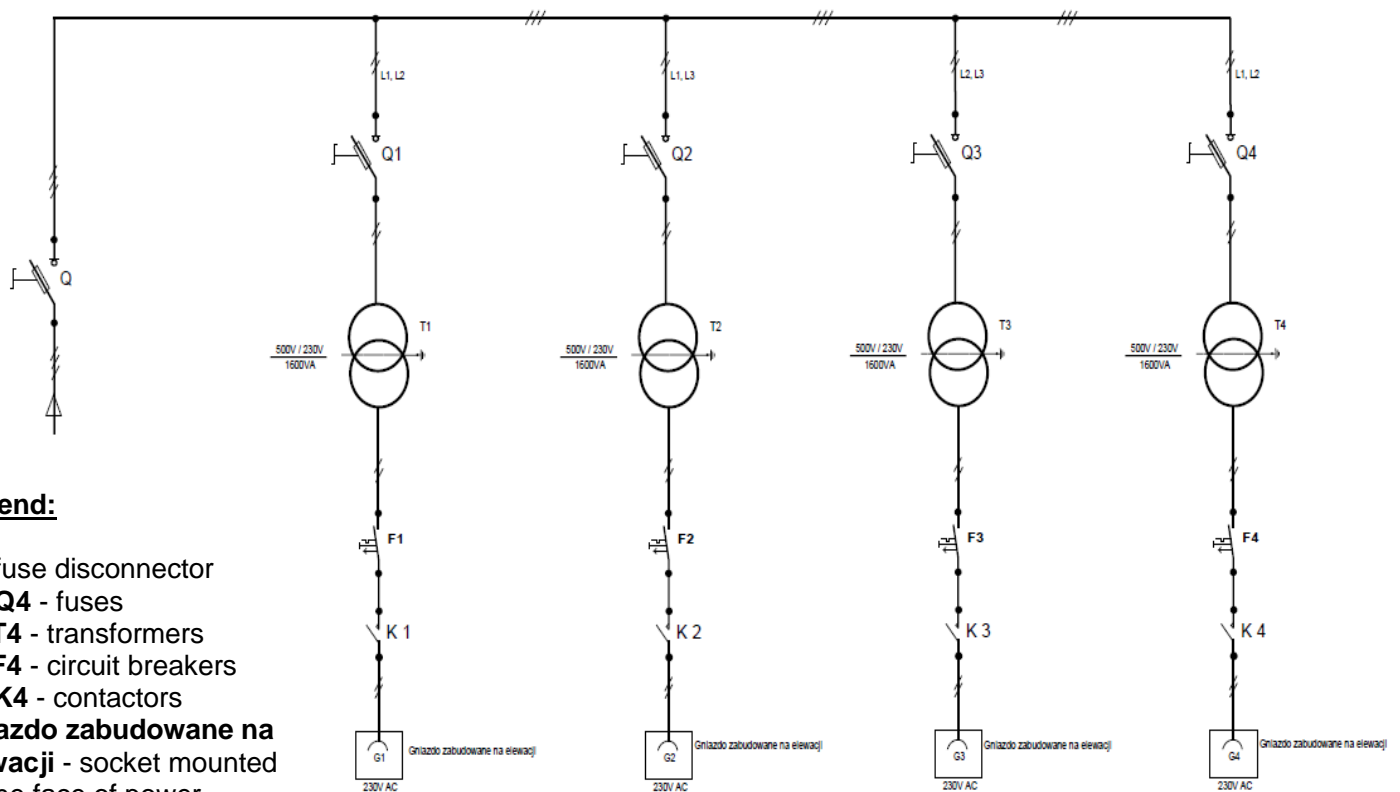
The device is set in a construction made of a square steel profile and the housing has got firings allowing for fixing.

MODE OF OPERATION

The control of 230V outlets is carried out with the buttons on the face of the power supply unit. The switching-on of the power supply outlet unit is possible after plugging in to the socket in the power supply unit. Any attempt to unplug causes shutting down the power supply unit.

On the 500V side of the power supply unit there is a fuse disconnecter and on the 230V side four outlets equipped with the power protection against short-circuits and overloads. In the 230V outlet circuit electrical separation of the single circuit has been applied in accordance with p.2.9.3 PN-G 50001: 2002 using a separation transformer.

SCHEMATIC DIAGRAM



Legend:

- Q** - fuse disconnector
- Q1-Q4** - fuses
- T1-T4** - transformers
- F1-F4** - circuit breakers
- K1-K4** - contactors
- Gniazdo zabudowane na elewacji** - socket mounted on the face of power supply

Orders should be submitted in writing or by fax to the address:

 **Instal-Service PL**
Spółka z ograniczoną odpowiedzialnością
Spółka komandytowa
58-506 Jelenia Góra, ul. Wrocławska 15a
tel. (+48 075) 64-57-950
fax. (+48 075) 64-57-951
e-mail: instal@instal-service.pl